

# PUNTE PER PANTOGRAFO

Router Bits



Page  
108

**PUNTE PER PANTOGRAFO PL25**  
PL25 Router Bits



110

**PUNTE PER PANTOGRAFO PL40**  
PL40 Router Bits



112

**PUNTE PER PANTOGRAFO TRAKTOR**  
Traktor Router Bits



113

**PUNTE PER PANTOGRAFO XP2**  
XP2 Router Bits



# 6

	Page	
<b>PUNTE PER PANTOGRAFO HP2</b> HP2 Router Bits	114	
<b>PUNTE PER PANTOGRAFO TOP2</b> TOP2 Router Bits	116	
<b>PUNTE PER PANTOGRAFO EVO</b> EVO Router Bits	117	
<b>PUNTE PER PANTOGRAFO NESTING</b> NESTING Router Bits	118	
<b>PUNTE PER PANTOGRAFO TOP HD</b> TOP HD Router Bits	119	
<b>PUNTE PER PANTOGRAFO TOP R</b> TOP R Router Bits	120	
<b>PUNTE PER PANTOGRAFO DR</b> DR Router Bits	121	
<b>PUNTE PER PANTOGRAFO "SMART"</b> "Smart" Straight Router Bits	122	
<b>PUNTE PER PANTOGRAFO SAGOMATE</b> Profile Router Bits	124	

# 6 PUNTE PER PANTOGRAFO

## CARATTERISTICHE TECNICHE Technical Features

### PRESTAZIONI:

- OTTIMA
- BUONA
- ACCETTABILE

### ESEMPIO:

- Prestazione: ottima
- 6-8 Velocità consigliata

### PERFORMANCE:

- BEST
- GOOD
- ACCEPTABLE

### EXAMPLE:

- Performance: best
- 6-8 Feeding speed

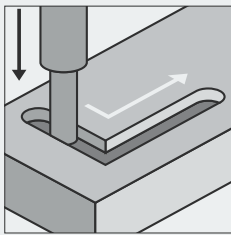
	PL25	PL40	HP2	HP4	TOP DR BASIC	TOP DR PLUS	NESTING	TOP HD	SMART	TOP 2	TOP R	XP 2	TRAKTOR	EVO
Numero di denti	1+1	1+1	2+2	2+2	3/1+1	3/3	3	2/3	1/2	3	3	2+2	3/4	2
Tipo di forante	HM	HM	HM/PCD	HM/PCD	HM	PCD	PCD	PCD	PCD	PCD	PCD	PCD	-	PCD
LEGGNO MASSICCIO	● 2-4	● 2-4	● 3-5	● 3-5	● 3-5	● 3-5	● 3-5	● 3-5	●	● 6-8	● 6-8	● 6-8	●● 8-10	●● 8-10
LAMELLARE	● 4-6	● 4-6	●● 5-10	●● 5-10	● 5-10	● 5-10	● 5-10	● 5-10	●	● 8-12	● 8-12	●● 8-12	●● 10-12	●● 10-12
TRUCIOLARE	●●● 6-8	●●● 6-8	●●● 8-20	●●● 8-20	●●● 8-20	●●● 8-20	●●● 8-20	●●● 8-20	●●	●●● 12-30	●●● 12-30	●●● 12-30	●●● 14-32	●●● 14-32
TRUCIOLARE PLACCATO	●●● 4-6	●●● 4-6	●●● 5-10	●●● 5-10	●●● 5-10	●●● 5-10	●●● 5-10	●●● 5-10	●●	●●● 8-12	●●● 8-12	●●● 8-12	●●● 10-14	●●● 10-14
TRUCIOLARE MELAMINICO	●●● 6-8	●●● 6-8	●●● 8-20	●●● 8-20	●●● 8-20	●●● 8-20	●●● 8-20	●●● 8-20	●●	●●● 12-30	●●● 12-30	●●● 12-30	●●● 14-32	●●● 14-32
TRUCIOLARE RIVESTITO CARTA	●●● 4-6	●●● 4-6	●●● 5-10	●●● 5-10	●●● 5-10	●●● 5-10	●●● 5-10	●●● 5-10	●●	●●● 8-12	●●● 8-12	●●● 8-12	●●● 14-32	●●● 14-32
MDF GREZZO	●●● 6-8	●●● 6-8	●●● 8-20	●●● 8-20	●●● 8-20	●●● 8-20	●●● 8-20	●●● 8-20	●●	●●● 12-30	●●● 12-30	●●● 12-30	●●● 14-32	●●● 14-32
MDF PLACCATO	●●● 4-6	●●● 4-6	●●● 5-10	●●● 5-10	●●● 5-10	●●● 5-10	●●● 5-10	●●● 5-10	●●	●●● 8-12	●●● 8-12	●●● 8-12	●●● 10-14	●●● 10-14
MDF MELAMINICO	●●● 6-8	●●● 6-8	●●● 8-20	●●● 8-20	●●● 8-20	●●● 8-20	●●● 8-20	●●● 8-20	●●	●●● 12-30	●●● 12-30	●●● 12-30	●●● 14-32	●●● 14-32
MDF RIVESTITO CARTA	●●● 4-6	●●● 4-6	●●● 5-10	●●● 5-10	●●● 5-10	●●● 5-10	●●● 5-10	●●● 5-10	●●	●●● 8-12	●●● 8-12	●●● 8-12	●●● 10-14	●●● 10-14
MULTIPLY	●●● 2-4	●●● 2-4	●●● 3-5	●●● 3-5	●● 3-5	●● 3-5	●●● 3-5	●●● 3-5	●●●	●●● 6-8	●●● 6-8	●●● 6-8	●●● 8-10	●●● 8-10
HPL, CPL, Trespa	● 2-4	● 2-4	● 3-5	●● 3-5	●● 3-5	●● 3-5	●● 3-5	●● 3-5	●●●	●●● 6-8	●●● 6-8	●● 6-8	●●● 8-10	●●● 8-10
OSB	●● 6-8	●● 6-8	●● 8-20	●● 8-20	●● 8-20	●● 8-20	●●● 8-20	●●● 8-20	●●	●●● 12-30	●●● 12-30	●●● 12-30	●●● 14-32	●●● 14-32
POLIURETANO RIGIDO	● 2-4	● 2-4	● 3-5	●● 3-5	●● 3-5	●● 3-5	●● 3-5	●● 3-5	●●●	●●● 6-8	●● 6-8	●● 6-8	●●● 8-10	●●● 8-10
PLASTOMERO	● 2-4	● 2-4	● 3-5	●● 3-5	●● 3-5	●● 3-5	●● 3-5	●● 3-5	●●●	●●● 6-8	●● 6-8	●● 6-8	●●● 8-10	●●● 8-10
P. BASE DI FIBRA DI VETRO	● 2-4	● 2-4	● 3-5	●● 3-5	●● 3-5	●● 3-5	●● 3-5	●● 3-5	●●●	●●● 6-8	●● 6-8	●● 6-8	●●● 8-10	●●● 8-10
CORIAN, VARICOR	● 2-4	● 2-4	● 3-5	●● 3-5	●● 3-5	●● 3-5	● 3-5	● 3-5	●●●	● 6-8	● 6-8	●● 6-8	●●● 8-10	●●● 8-10
PANNELLO CARTONGESSO	●● 4-6	●● 4-6	●● 5-10	●●● 5-10	●● 5-10	●● 5-10	●●● 5-10	●●● 5-10	●●●	●●● 8-12	●●● 8-12	●● 8-12	●●● 10-14	●●● 10-14

# Router Bits

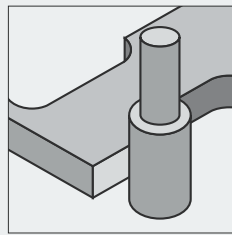


## LAVORAZIONE

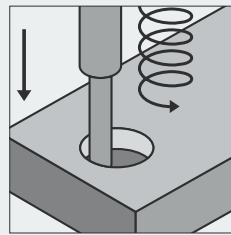
### Application



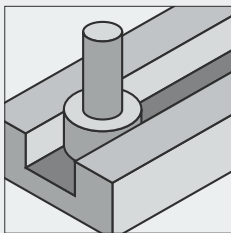
Forare fresare  
Drill milling



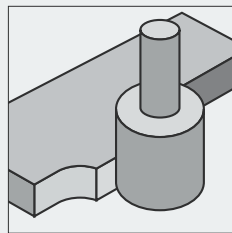
Fresatura esterna  
sgrossare rifinire  
External milling roughing  
and finishing



Fori eccentrici  
Eccentric holes



Fresatura interna  
Internal milling

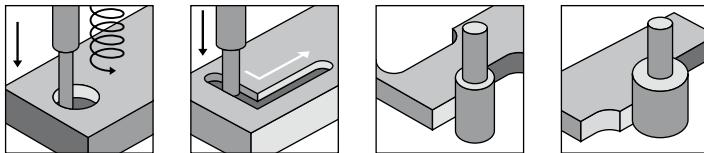


Contornare  
Contouring



# PUNTE PER PANTOGRAFO PL25

## PL25 Router Bits



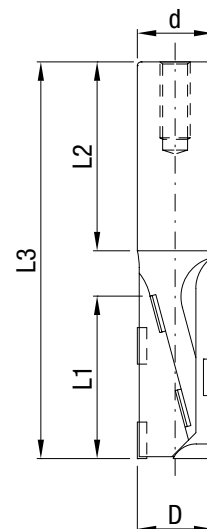
Punte per pantografo ideali per la pantografatura e fresatura di pannelli in Truciolare e MDF grezzi o nobilitati, multistrati, su macchine CNC.  
Buona finitura sul pannello e sul rivestimento.  
Placchette con angolo assiale positivo/negativo.  
Taglio elicoidale e scarico del truciolo raggiato per una migliore evacuazione del truciolo.  
Forante in HM.  
Capacità di 2/3 riaffilature.

Used for CNC routing and contouring chipboard, MDF, HDF and plywood panels with or without veneer, paper or plastic coatings.  
Good finish both on panel and coating.  
Positive and negative tips axial angle.  
Compression type cut with radius chip pocket for an increased dust flow.  
Carbide plunge cut.  
Average 2-3 resharpening.



### PL25 Forante in HM · Carbide Plunge Cut

CODE RH	CODE LH	D	L1	d	L2	L3	Z
2700500	2700501	8	22	12	40	72	1+1
2700502	2700503	10	25	12	40	75	1+1
2700504	2700505	12	25	12	40	75	1+1
2700506	2700507	12	25	16	50	85	1+1
2700508	2700509	12	25	20	50	85	1+1
2700510	2700511	12	25	25	55	90	1+1
2700512	2700513	12	35	12	40	85	1+1
2700514	2700515	14	25	16	50	85	1+1
2700516	2700517	16	25	16	50	85	1+1
2700518	2700519	16	25	20	50	85	1+1
2700520	2700521	16	35	16	50	95	1+1
2700522	2700523	16	35	20	50	95	1+1
2700524	2700525	16	43	16	50	105	1+1
2700526	2700527	16	43	20	50	105	1+1
2700528	2700529	18	25	16	50	85	1+1
2700530	2700531	18	25	20	50	85	1+1
2700532	2700533	18	25	25	55	90	1+1
2700534	2700535	18	35	16	50	95	1+1
2700536	2700537	18	35	20	50	95	1+1
2700538	2700539	18	35	25	55	100	1+1
2700540	2700541	18	43	16	50	105	1+1
2700542	2700543	18	43	20	50	105	1+1
2700544	2700545	18	43	25	55	110	1+1
2700546	2700547	20	25	20	50	85	1+1
2700548	2700549	20	25	25	55	90	1+1
2700550	2700551	20	35	20	50	95	1+1



## PL25 Forante in HM · Carbide Plunge Cut

CODE RH	CODE LH	D	L1	d	L2	L3	Z
2700552	2700553	20	35	25	55	100	1+1
2700554	2700555	20	43	20	50	105	1+1
2700556	2700557	20	43	25	55	110	1+1
2700558	2700559	20	52	20	50	112	1+1
2700560	2700561	20	52	25	55	117	1+1
2700562	2700563	20	65	20	50	125	1+1
2700564	2700565	20	65	25	55	130	1+1
2700566	2700567	25	85	20	50	145	1+1
2700568	2700569	25	85	25	55	150	1+1

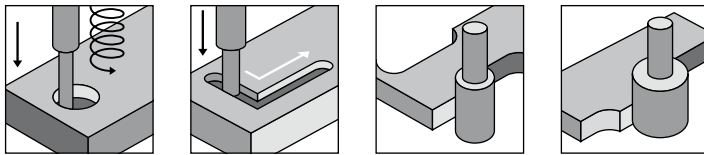
## PL25 Forante in HM · Carbide Plunge Cut



CODE RH	CODE LH	D	L1	d	L2	L3	Z
2700800	2700801	12,7 (1/2")	25 (1")	12,7 (1/2")	40 (15/8")	75 (3")	1+1
2700802	2700803	12,7 (1/2")	35 (13/8")	12,7 (1/2")	40 (15/8")	85 (33/8")	1+1
2700804	2700805	15,88 (5/8")	25 (1")	15,88 (5/8")	50 (2")	85 (33/8")	1+1
2700806	2700807	15,88 (5/8")	35 (13/8")	15,88 (5/8")	50 (2")	95 (36/8")	1+1
2700808	2700809	19,05 (3/4")	25 (1")	19,05 (3/4")	50 (2")	85 (33/8")	1+1
2700810	2700811	19,05 (3/4")	35 (13/8")	19,05 (3/4")	50 (2")	95 (36/8")	1+1
2700814	2700815	19,05 (3/4")	43 (15/8")	19,05 (3/4")	50 (2")	108 (42/8")	1+1
2700812	2700813	19,05 (3/4")	52 (21/16")	19,05 (3/4")	50 (2")	117 (45/8")	1+1

# PUNTE PER PANTOGRAFO PL40

## PL40 Router Bits



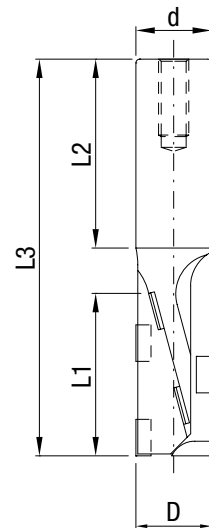
Punte per pantografo ideali per la pantografatura e fresatura di pannelli in Truciolare e MDF grezzi o nobilitati, multistrati, su macchine CNC.  
Buona finitura sul pannello e sul rivestimento.  
Placchette con angolo assiale positivo/negativo.  
Taglio elicoidale e scarico del truciolo raggiato per una migliore evacuazione del truciolo.  
Forante in HM.  
Capacità di 8/10 riaffilature.

Used for CNC routing and contouring chipboard, MDF, HDF and plywood panels with or without veneer, paper or plastic coatings.  
Good finish both on panel and coating.  
Positive and negative tips axial angle.  
Compression type cut with radius chip pocket for an increased dust flow.  
Carbide plunge cut.  
Average 8-10 resharpening.



### PL40 Forante in HM · Carbide Plunge Cut

CODE RH	CODE LH	D	L1	d	L2	L3	Z
2800012	2800013	16	25	16	50	85	1+1
2800016	2800017	16	35	16	50	95	1+1
2800024	2800025	18	25	16	50	85	1+1
2800028	2800029	18	25	20	50	85	1+1
2800032	2800033	18	25	25	55	90	1+1
2800040	2800041	18	35	20	50	95	1+1
2800044	2800045	18	35	25	55	100	1+1
2800052	2800053	18	43	20	50	105	1+1
2800056	2800057	18	43	25	55	110	1+1
2800064	2800065	20	25	20	50	85	1+1
2800068	2800069	20	25	25	55	90	1+1
2800076	2800077	20	35	20	50	95	1+1
2800080	2800081	20	35	25	55	100	1+1
2800088	2800089	20	43	20	50	105	1+1
2800092	2800093	20	43	25	55	110	1+1
2800100	2800101	20	52	20	50	112	1+1
2800104	2800105	20	52	25	55	117	1+1
2800108	2800109	25	65	20	50	125	1+1
2800112	2800113	25	65	25	55	130	1+1
2800116	2800117	25	85	20	50	145	1+1
2800120	2800121	25	85	25	55	150	1+1



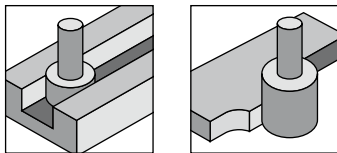
## PL40 Forante in PCD · PCD Plunge Cut

CODE RH	CODE LH	D	L1	d	L2	L3	Z
2801012	2801013	16	25	16	50	85	1+1
2801016	2801017	16	35	16	50	95	1+1
2801024	2801025	18	25	16	50	85	1+1
2801028	2801029	18	25	20	50	85	1+1
2801032	2801033	18	25	25	55	90	1+1
2801040	2801041	18	35	20	50	95	1+1
2801044	2801045	18	35	25	55	100	1+1
2801052	2801053	18	43	20	50	105	1+1
2801056	2801057	18	43	25	55	110	1+1
2801064	2801065	20	25	20	50	85	1+1
2801068	2801069	20	25	25	55	90	1+1
2801076	2801077	20	35	20	50	95	1+1
2801080	2801081	20	35	25	55	100	1+1
2801088	2801089	20	43	20	50	105	1+1
2801092	2801093	20	43	25	55	110	1+1
2801100	2801101	20	52	20	50	112	1+1
2801104	2801105	20	52	25	55	117	1+1
2801108	2801109	25	65	20	50	125	1+1
2801112	2801113	25	65	25	55	130	1+1
2801116	2801117	25	85	20	50	145	1+1
2801120	2801121	25	85	25	55	150	1+1



# PUNTE PER PANTOGRAFO TRAKTOR

## Traktor Router Bits



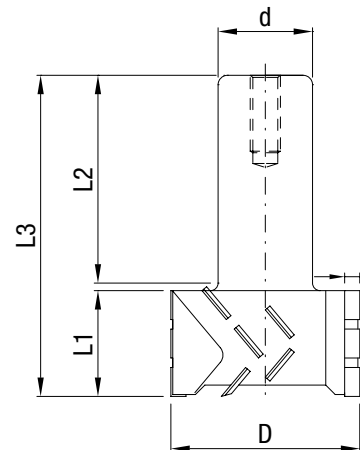
Punte per pantografo ideali per la scontornatura di pannelli in Truciolare e MDF grezzi o nobilitati, multi-strati, HPL su macchine CNC.  
 Placchette con angolo assiale elevato per una miglior finitura su tutti i tipi di rivestimento.  
 Elevata velocità di avanzamento (Z3 fino a 25 m/min – Z4 fino a 35 m/min).  
 Grazie al Diamante anche in testa è l'ideale per eseguire battute o ribassi.  
 Gambo rettificato idoneo anche al calettamento termico, Tribos o Sino.  
 Diamante Lucido.  
 Capacità di 8/10 riaffilature.

Used for CNC contouring chipboard, MDF, HDF and sandwich panels with or without veneer, paper or plastic coatings and plywood.  
 High degree tips axial angle for better finishing on any type of coating.  
 High feeding speed (Z3 up to 25 meters/minute – Z4 up to 35 meters/minute).  
 Bottom sharpened tips for rabbetting or rebating.  
 Ground shank suitable for heat shrinking chucks, Sino or Tribos™.  
 Polished PCD.  
 Average 8-10 resharpening.



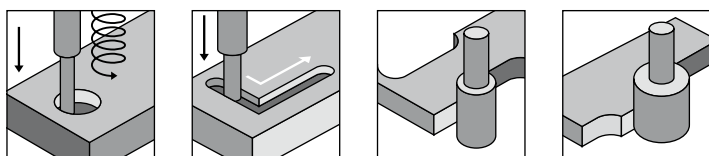
### Traktor

	CODE LH	D	L1	d	L2	L3	Z
2500020	2500021	50	23	25	55	80	3+3
2500022	2500023	50	23	25	55	80	4+4
2500024	2500025	50	28	25	55	85	3+3
2500026	2500027	50	28	25	55	85	4+4
2500028	2500029	50	38	25	55	95	3+3
2500030	2500031	50	38	25	55	95	4+4
2500040	2500041	60	23	25	55	80	3+3
2500042	2500043	60	23	25	55	80	4+4
2500032	2500033	60	28	25	55	85	3+3
2500034	2500035	60	28	25	55	85	4+4
2500036	2500037	60	38	25	55	95	3+3
2500038	2500039	60	38	25	55	95	4+4



# PUNTE PER PANTOGRAFO XP2

## XP2 Router Bits



Punte per pantografo ideali per la pantografatura e fresatura di pannelli in Truciolare e MDF grezzi o nobilitati, multistrati, ... su macchine CNC.

Ottima finitura sul pannello e sul rivestimento.

Placchette con angolo assiale positivo/negativo molto elevato per una migliore finitura con una maggiore velocità di avanzamento. Il taglio frazionato e distanziato elicoidale permette per una migliore evacuazione del truciolo con riduzione della rumorosità.

Gambo rettificato idoneo anche al calettamento termico, Tribos o Sino.

Diamante altezza 4 mm.

Forante in PCD.

Capacità di 8/10 riaffilature.

Used for CNC routing and contouring chipboard, MDF, HDF and plywood panels with or without veneer, paper or plastic coatings.

Excellent finish both on panel and coating.

High degree positive and negative tips axial angle for better finishing and higher feeding speed.

Split compression type cut with generous chip pocket granting an higher dust evacuation rate and a lower noise level.

Ground shank suitable for heat shrinking chucks, Sino or Tribos™.

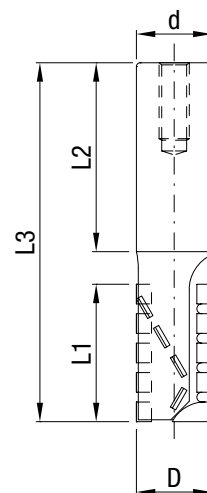
PCD plunge cut.

Average 8-10 resharpening.



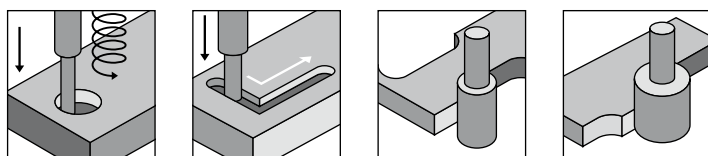
## XP2 Forante in PCD · PCD Plunge Cut

CODE RH	CODE LH	D	L1	d	L2	L3	Z
3800012	3800013	20	24	20	50	85	2+2
3800020	3800021	20	24	25	55	90	2+2
3800028	3800029	20	28	20	50	85	2+2
3800036	3800037	20	28	25	55	90	2+2
3800044	3800045	20	36	20	50	95	2+2
3800052	3800053	20	36	25	55	100	2+2
3800060	3800061	20	48	20	50	105	2+2
3800068	3800069	20	48	25	55	110	2+2
3800076	3800077	25	24	25	55	90	2+2
3800084	3800085	25	28	20	50	85	2+2
3800092	3800093	25	28	25	55	90	2+2
3800100	3800101	25	36	20	50	95	2+2
3800108	3800109	25	36	25	55	100	2+2
3800116	3800117	25	48	20	50	105	2+2
3800124	3800125	25	48	25	55	110	2+2
3800132	3800133	25	55	20	50	115	2+2
3800140	3800141	25	55	25	55	120	2+2
3800148	3800149	25	68	20	50	128	2+2
3800156	3800157	25	68	25	55	133	2+2
3800164	3800165	25	86	20	50	145	2+2
3800172	3800173	25	86	25	55	150	2+2



# PUNTE PER PANTOGRAFO HP2

## HP Router Bits



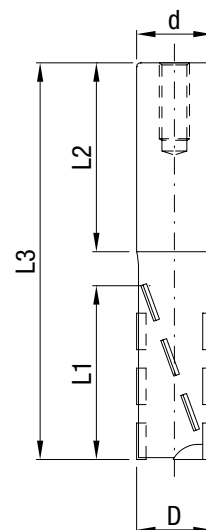
Punte per pantografo ideali per la pantografatura e fresatura di pannelli in Truciolare e MDF grezzi o nobilitati, multistrati, su macchine CNC. Ottima finitura sul pannello e sul rivestimento. Placchette con angolo assiale positivo/negativo. Scarico del truciolo raggiato per una migliore evacuazione del truciolo ed una ridotta rumorosità. Gambo rettificato idoneo anche al calettamento termico, Tribos o Sino. Possibilità di scelta tra forante in HM o in PCD. Capacità di 2/3 riaffilature per serie HP2. Capacità di 8/10 riaffilature per serie HP4.

Used for CNC routing and contouring chipboard, MDF, HDF and plywood panels with or without veneer, paper or plastic coatings. Excellent finish both on panel and coating. Positive and negative tips axial angle. Compression type cut with radius chip pocket. Ground shank suitable for heat shrinking chucks, Sino or Tribos™. Available Carbide or PCD Plunge cut. Average 2-3 resharpening (HP2 series) Average 8-10 resharpening (HP4 series)



### “HP2” con forante in HM · Carbide Plunge Cut

CODE RH	CODE LH	D	L1	d	L2	L3	Z
3500104	3500105	16	23	20	50	85	2+2
3500112	3500113	18	27	20	50	85	2+2
3500120	3500121	18	27	25	55	90	2+2
3500128	3500129	18	36	20	50	95	2+2
3500136	3500137	18	36	25	55	100	2+2
3500144	3500145	20	27	20	50	85	2+2
3500152	3500153	20	27	25	55	90	2+2
3500160	3500161	20	36	20	50	95	2+2
3500168	3500169	20	36	25	55	100	2+2
3500176	3500177	20	46	20	50	105	2+2
3500184	3500185	20	46	25	55	110	2+2
3500216	3500217	20	57	20	50	117	2+2
3500224	3500225	20	57	25	55	122	2+2
3500192	3500193	25	67	20	50	126	2+2
3500200	3500201	25	67	25	55	133	2+2
3500208	3500209	25	86	25	55	150	2+2



### “HP2” con forante in PCD · PCD Plunge Cut

CODE RH	CODE LH	D	L1	d	L2	L3	Z
3501104	3501105	16	23	20	50	85	2+2
3501112	3501113	18	27	20	50	85	2+2
3501120	3501121	18	27	25	55	90	2+2
3501128	3501129	18	36	20	50	95	2+2
3501136	3501137	18	36	25	55	100	2+2

# PUNTE PER PANTOGRAFO HP2

## HP Router Bits

“HP2” con forante in PCD · PCD Plunge Cut

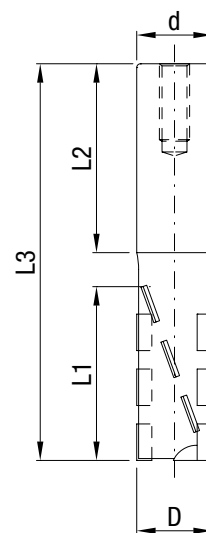
CODE RH	CODE LH	D	L1	d	L2	L3	Z
3501144	3501145	20	27	20	50	85	2+2
3501152	3501153	20	27	25	55	90	2+2
3501160	3501161	20	36	20	50	95	2+2
3501168	3501169	20	36	25	55	100	2+2
3501176	3501177	20	46	20	50	105	2+2
3501184	3501185	20	46	25	55	110	2+2
3501216	3501217	20	57	20	50	117	2+2
3501224	3501225	20	57	25	55	122	2+2
3501192	3501193	25	67	20	50	126	2+2
3501200	3501201	25	67	25	55	133	2+2
3501208	3501209	25	86	25	55	150	2+2

“HP4” con forante in HM · Carbide Plunge Cut

CODE RH	CODE LH	D	L1	d	L2	L3	Z
3500500	3500501	20	27	20	50	85	2+2
3500508	3500509	20	27	25	55	90	2+2
3500516	3500517	20	36	20	50	95	2+2
3500524	3500525	20	36	25	55	100	2+2
3500532	3500533	25	46	20	50	105	2+2
3500540	3500541	25	46	25	55	110	2+2
3500548	3500549	25	67	25	55	133	2+2
3500556	3500557	25	86	25	55	150	2+2

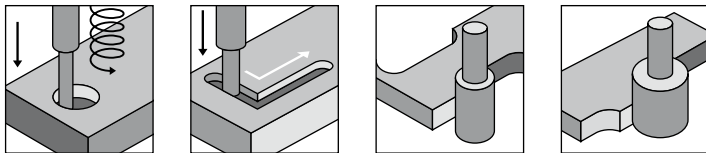
“HP4” con forante in PCD · PCD Plunge Cut

CODE RH	CODE LH	D	L1	d	L2	L3	Z
3501500	3501501	20	27	20	50	85	2+2
3501508	3501509	20	27	25	55	90	2+2
3501516	3501517	20	36	20	50	95	2+2
3501524	3501525	20	36	25	55	100	2+2
3501532	3501533	25	46	20	50	105	2+2
3501540	3501541	25	46	25	55	110	2+2
3501548	3501549	25	67	25	55	133	2+2
3501556	3501557	25	86	25	55	150	2+2



# PUNTE PER PANTOGRAFO TOP 2

## TOP 2 Router Bits



Punte per pantografo ideali per la pantografatura e fresatura di pannelli in Truciolare e MDF grezzi o nobilitati, multistrati, su macchine CNC.

Ottima finitura sul pannello e sul rivestimento.

Placchette con angolo assiale positivo/negativo con prevalenza della parte negativa.

Il taglio frazionato e lo scarico del truciolo raggiato permettono una buona evacuazione del truciolo e un'elevata velocità di avanzamento.

Gambo rettificato idoneo anche al calettamento termico, Tribos o Sino.

Forante in PCD.

Capacità di 8/10 riaffilature.

Used for CNC routing and contouring chipboard, MDF, HDF and plywood panels with or without veneer, paper or plastic coatings.

Excellent finish both on panel and coating.

Positive and negative tips axial angle, with prevalence of negative ones.

Split compression type cut with generous chip pocket granting a higher dust evacuation rate and a greater feeding speed.

Ground shank suitable for heat shrinking chucks, Sino or Tribos™.

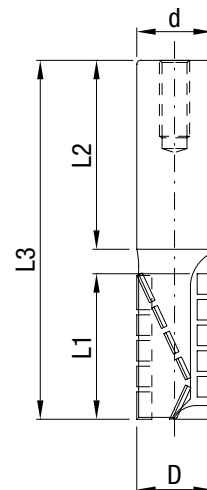
PCD plunge cut.

Average 8-10 resharpening.



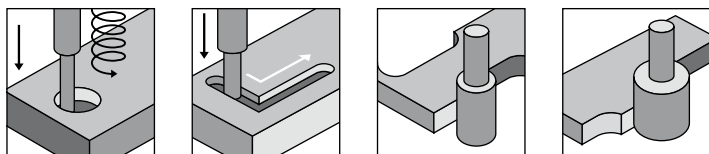
### Top 2 con forante in PCD · PCD Plunge Cut

CODE RH	CODE LH		L1	d	L2	L3	Z
2900200	2900201	18	22	20	50	85	3
2900202	2900203	20	28	20	50	85	3
2900204	2900205	20	38	20	50	95	3
2900206	2900207	20	45	20	50	105	3
2900208	2900209	20	28	25	55	90	3
2900210	2900211	20	38	25	55	100	3
2900212	2900213	25	28	25	55	90	3
2900214	2900215	25	38	25	55	105	3
2900216	2900217	25	45	25	55	110	3
2900218	2900219	25	55	25	55	123	3
2900220	2900221	25	64	25	55	130	3
2900222	2900223	25	85	25	55	150	3



# PUNTE PER PANTOGRAFO EVO

## EVO Router Bits



Punte per pantografo ideali per la scontornatura e la fresatura di pannelli in truciolare e MDF nobilitati e grezzi, su macchine Cnc.

Taglio di qualità straordinariamente elevata, sia su pannello grezzo che rivestito, ideale per avanzamenti elevati sia sul dritto che sui repentini cambi di direzione.

Performance elevatissime, grazie alle placchette dall'accentuato angolo assiale positivo/negativo, con la maggior parte dei taglienti disposti in positivo, con la spirale completamente traente, studiata per l'evacuazione del truciolo verso l'alto.

Forante in PCD.

Router bits ideal for milling and contouring chipboards, Mdf, with or without veneer, used on CNC machines.

Extremely high cutting quality on raw panel and coating, ideal for high feeding speed, both for straight and split cuts.

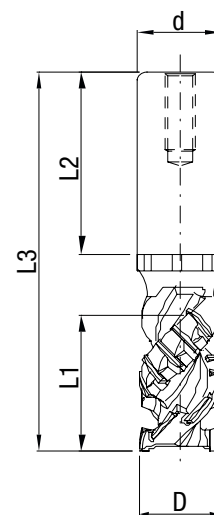
Very high performance thanks to positive and negative tips axial angle, mostly positive and to the top whirl dust evacuation.

PCD Plunge cut.



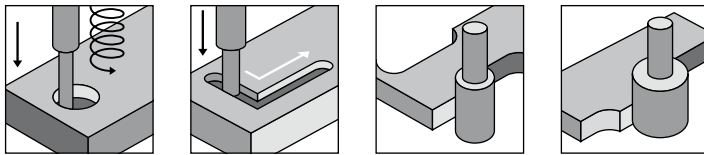
### EVO con forante in PCD · PCD Plunge Cut

CODE RH	CODE LH	D	L1	d	L2	L3	Z
3400012		20	28	20	50	93	2
3400020		25	28	25	55	98	2
3400028		20	45	20	50	110	2
3400034		25	45	25	55	115	2
3400042		25	55	25	55	127	2
3400050		25	67	25	55	137	2



# PUNTE PER PANTOGRAFO NESTING

## Nesting Router Bits



Punte per pantografo studiate per la lavorazione specifica del NESTING, Ideali per pantografatura e fresatura di pannelli in truciolare, MDF e multistrato sia grezzi che rivestiti, da utilizzare su macchine CNC. Ottima finitura sul pannello e sul rivestimento, Placchette con angolo assiale positivo/negativo con prevalenza della parte positiva.

Il taglio frazionato permette una buona evacuazione del truciolo.

Gambo rettificato idoneo anche al calettamento termico, Tribos, o Sino

Forante in PCD

Capacità di 4/6 affilature

Router studied for Nesting, ideal for milling and contouring chipboards, Mdf, with our without veneer, used on CNC machines.

Excellent finishing both on panel and coating.

Tips with positive/negative axial angle, mostly positive.

Split cuts allowing a good dust evacuation.

Ground shank suitable for heat shrinking chucks, Sino or Tribos.

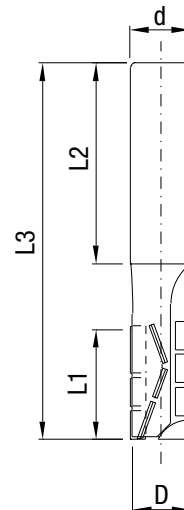
PCD Plunge cut.

4/6 re-sharpening available.



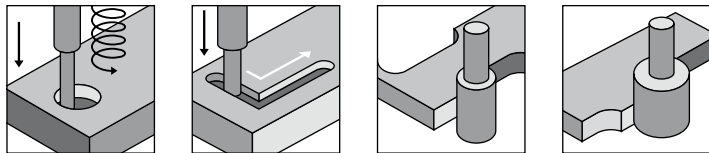
### Nesting con forante in PCD - PCD plunge cut

CODE RH	D	L1	d	L2	L3	Z
3602202	10	22	12	40	75	2
3602204	12	22	12	40	75	3
3602206	12	27	12	40	75	3
3602208	12	33	12	40	85	3
3602210	14	22	16	50	85	3
3602212	14	27	16	50	85	3
3602214	14	33	16	50	95	3



# PUNTE PER PANTOGRAFO TOP HD

## TOP HD Router Bits



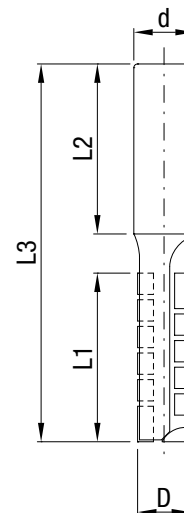
Punte per pantografo ideali per la pantografatura e fresatura di pannelli ad elevato spessore in Truciolare e MDF grezzi o nobilitati, multistrati, su macchine CNC. Grazie al corpo in materiale antivibrante permette di avere velocità di avanzamento superiori con una contemporanea riduzione della rumorosità. Il taglio frazionato permette una buona evacuazione del truciolo. Ottima finitura sul pannello e sul rivestimento. Placchette con angolo assiale positivo/negativo con prevalenza della parte negativa. Gambo rettificato idoneo anche al calettamento termico, Tribos o Sino. Forante in PCD. Capacità di 8/10 riaffilature.

Used for CNC routing and contouring chipboard, MDF, HDF and plywood high wallthickness panels with or without veneer, paper or plastic coatings. Thanks to the vibration resistant body, higher feeding speeds and lower noise can be achieved. Split type cut with generous chip pocket granting a higher dust evacuation. Excellent finish both on panel and coating. Positive and negative tips axial angle, with prevalence of negative ones. Ground shank suitable for heat shrinking chucks, Sino or Tribos™. PCD plunge cut. Average 8-10 resharpening.



### Top HD con forante in PCD · PCD Plunge Cut

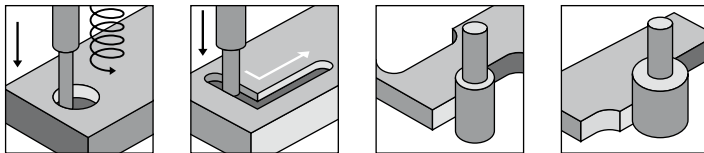
CODE RH	CODE LH	D	L1	d	L3	Z	H
2902202	2902203	10	23	12	40	75	3
2902204	2902205	12	27	12	40	75	3
2902206	2902207	12	38	12	40	90	3
2902218	2902219	12	22	12	40	75	3
2902220	2902221	12	27	12	40	75	3
2902208	2902209	14	45	16	50	100	2
2902210	2902211	16	55	16	50	100	3
2902212	2902213	20	67	20	50	125	3
2902214	2902215	22	75	20	50	125	3
2902216	2902217	25	105	25	55	170	3





# PUNTE PER PANTOGRAFO TOP R

## TOP R Router Bits



Punte per pantografo ideali per la pantografatura e fresatura di pannelli in Truciolare e MDF grezzi o nobilitati, multistrati, su macchine CNC.

Ottima finitura sul pannello e sul rivestimento.

Placchette con angolo assiale positivo/negativo con prevalenza della parte positiva.

Il taglio frazionato e lo scarico del truciolo raggiato permettono un'ottima evacuazione del truciolo diretta verso l'aspirazione e un'elevata velocità di avanzamento.

Gambo rettificato idoneo anche al calettamento termico, Tribos o Sino.

Forante in PCD.

Capacità di 8/10 riaffilature.

Used for CNC routing and contouring chipboard, MDF, HDF and plywood panels with or without veneer, paper or plastic coatings.

Excellent finish both on panel and coating.

Positive and negative tips axial angle, with prevalence of positive ones.

Split compression type cut with generous chip pocket granting a higher dust evacuation rate pointing directly to vacuum system and a greater feeding speed.

Ground shank suitable for heat shrinking chucks, Sino or Tribos™.

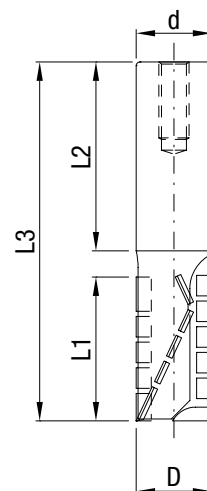
PCD plunge cut.

Average 8-10 resharpening.



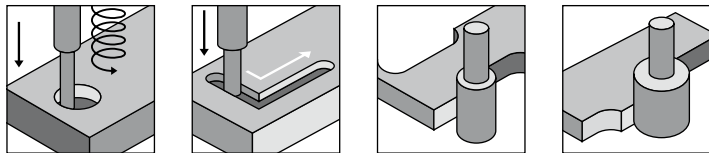
### Top R con forante in PCD · PCD Plunge Cut

CODE RH	CODE LH	D	L1	d	L2	L3	Z
3600020	3600021	18	22	20	50	85	3
3600022	3600023	20	28	20	50	85	3
3600024	3600025	20	38	20	50	95	3
3600026	3600027	20	45	20	50	105	3
3600028	3600029	20	28	25	55	90	3
3600030	3600031	20	38	25	55	100	3
3600032	3600033	25	28	25	55	90	3
3600034	3600035	25	38	25	55	105	3
3600036	3600037	25	45	25	55	110	3
3600038	3600039	25	55	25	55	123	3
3600040	3600041	25	62	25	55	130	3
3600042	3600043	25	85	25	55	150	3



# PUNTE PER PANTOGRAFO DR

## DR Router Bits



Punte per pantografo a doppio senso di rotazione ideali per la pantografatura e fresatura di pannelli in Truciolare e MDF grezzi o nobilitati, multistrati, su macchine CNC.

Permette di eseguire la squadratura senza la necessità di effettuare il cambio dell'utensile per salvare lo spigolo dei pannelli. L'esecuzione elicoidale nella parte superiore permette un'elevata velocità di avanzamento. La parte inferiore può essere scelta fra Z1+1(Basic) o Z3 (Plus) a seconda delle velocità e metrature desiderate nella sezione a rotazione Sinistra.

Ottima finitura sul pannello e sul rivestimento.

DR Basic con forante in HM.

DR Plus con forante in PCD.

Gambo rettificato idoneo anche al calettamento termico, Tribos o Sino.

Capacità di 8/10 riaffilature.

Right and left hand rotation router bits, suitable for CNC routing and contouring chipboard, MDF, HDF and plywood panels with or without veneer, paper or plastic coatings.

No change over is required when squaring panel, preserving corner integrity.

Helicoidal design of top section delivers high feeding speed.

Bottom section can be either Z1+1 (Basic) or Z3 (Plus) depending on speeds and overall production rate required.

Excellent finish both on panel and coating.

Carbide plunge cut (DR Plus).

PCD plunge cut (DR Plus).

Ground shank suitable for heat shrinking chucks, Sino or Tribos™.

Average 8-10 resharpening.

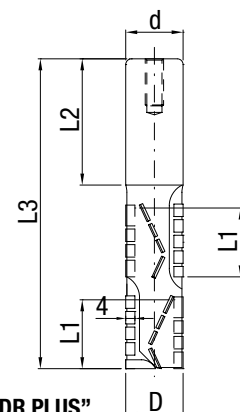
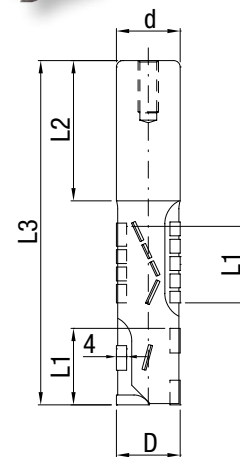


### “DR BASIC” con forante in HM · Carbide Plunge Cut

CODE	D	L1	d	L2	L3	Z
1900020	25	22	25	55	120	3
1900022	25	26	25	55	125	3
1900024	25	30	25	55	135	3
1900026	25	34	25	55	145	3

### “DR PLUS” con forante in PCD · PCD Plunge Cut

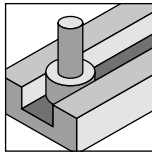
	D		d		L3	Z
1901020	25	22	25	55	120	3
1901022	25	26	25	55	125	3
1901024	25	30	25	55	135	3
1901026	25	34	25	55	145	3



Type “DR PLUS”

# PUNTE PER PANTOGRAFO "SMART"

"SMART" straight Router Bits



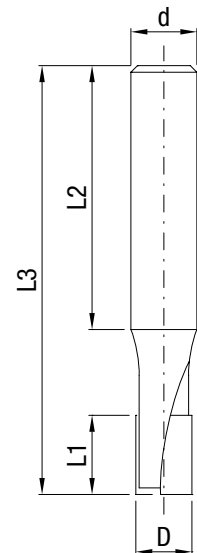
Punte per pantografo ideali nella fresatura e scanalatura di pannelli in Truciolare e MDF grezzi o nobilitati, multistrati, HPL integrale, materie plastiche a spessore, su macchine CNC.  
 Ottima finitura sul pannello e sul rivestimento.  
 Placchette Lucide con angolo assiale negativo o neutro.  
 Corpo in HM integrale fino a D12.  
 Forante in PCD.  
 Capacità di 3/4 riaffilature.

Used for CNC routing and contouring chipboard, MDF, HDF, HPL, plywood and sandwich panels with or without veneer, paper or plastic coatings. Excellent finish both on panel and coating. Polished PCD tips with negative or null axial angle. Full Carbide body up to  $\varnothing 12$ . PCD plunge cut. Average 3-4 resharpening.



## Smart con forante in PCD · PCD plunge cut

CODE RH	CODE LH	D	L1	d	L2	L3	Z	AXIAL
3300100	3300101	5	8	10	40	55	1	Neg.
3300108	3300109	5	8	12	40	55	1	Neg.
3300116	3300117	5,5	8	10	40	55	1	Neg.
3300124	3300125	5,5	8	12	40	55	1	Neg.
3300132	3300133	6	12	10	40	70	1	Neg.
3300140	3300141	6	12	12	40	70	1	Neg.
3300148	3300149	6,2	12	10	40	70	1	Neg.
3300156	3300157	6,2	12	12	40	70	1	Neg.
3300164	3300165	6,5	12	10	40	70	1	Neg.
3300172	3300173	6,5	12	12	40	70	1	Neg.
3300180	3300181	6,8	12	10	40	70	1	Neg.
3300188	3300189	6,8	12	12	40	70	1	Neg.
3300196	3300197	7	12	10	40	70	1	Neg.
3300204	3300205	7	12	12	40	70	1	Neg.
3300212	3300213	7,2	12	10	40	70	1	Neg.
3300220	3300221	7,2	12	12	40	70	1	Neg.
3300228	3300229	7,5	12	10	40	70	1	Neg.
3300236	3300237	7,5	12	12	40	70	1	Neg.
3300244	3300245	7,8	12	10	40	70	1	Neg.
3300252	3300253	7,8	12	12	40	70	1	Neg.
3300260	3300261	8	15	10	40	70	2	Neg.
3300268	3300269	8	15	12	40	70	2	Neg.
3300276	3300277	8,5	15	10	40	70	2	Neg.
3300284	3300285	8,5	15	12	40	70	2	Neg.
3300292	3300293	9	15	10	40	70	2	Neg.
3300300	3300301	9	15	12	40	70	2	Neg.

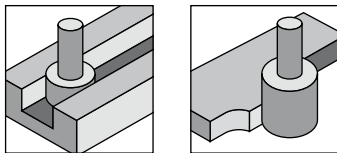


## Smart con forante in PCD · PCD plunge cut

CODE RH	CODE LH	D	L1	d	L2	L3	Z	AXIAL
3300308	3300309	9,5	15	10	40	70	2	Neg.
3300316	3300317	9,5	15	12	40	70	2	Neg.
3300324	3300325	10	15	10	40	70	2	Neg.
3300332	3300333	10	15	12	40	70	2	Neg.
3300340	3300341	10	22	10	40	70	2	0
3300348	3300349	10	22	12	40	70	2	0
3300356	3300357	10,5	15	10	40	70	2	Neg.
3300364	3300365	10,5	15	12	40	70	2	Neg.
3300372	3300373	12	25	12	40	70	2	0
3300380	3300381	16	25	16	50	85	2	0
3300388	3300389	16	25	20	50	85	2	0
3300396	3300397	16	35	16	50	95	2	0
3300404	3300405	16	35	20	50	95	2	0
3300412	3300413	20	25	20	50	95	2	0
3300420	3300421	20	35	20	50	95	2	0
3300428	3300429	20	25	25	50	95	2	0
3300436	3300437	20	35	25	50	95	2	0

# PUNTE PER PANTOGRAFO SAGOMATE

## Profile Router Bits



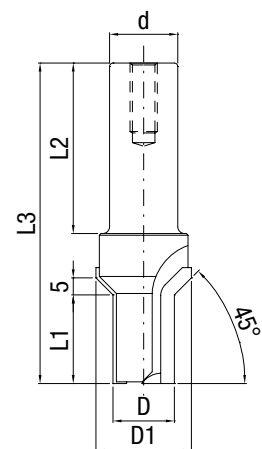
Punte per pantografo ideali per la profilatura di pannelli in Truciolare e MDF grezzi o nobilitati, multistrati, HPL e le principali materie plastiche su macchine CNC.  
 Diamante Lucido.  
 Gambo rettificato idoneo anche al calettamento termico, Tribos o Sino.  
 Ottima finitura sul pannello e sul rivestimento.  
 Capacità di 8/10 riaffilature.

Used for CNC routing and profiling chipboard, MDF, HDF, HPL and plywood panels with or without veneer, paper or plastic coatings.  
 Polished PCD.  
 Ground shank suitable for heat shrinking chucks, Sino or Tribos™.  
 Very good finish both on panel and coating.  
 Average 8-10 resharpening.



### Type A con forante in PCD · PCD plunge cut

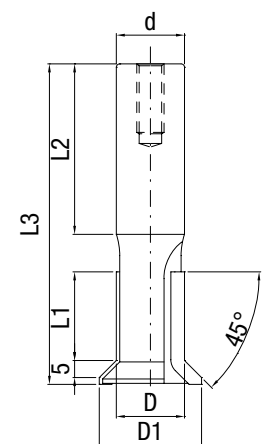
CODE RH	CODE LH	D	D1	L1	d	L2	L3	Z
2602020	2602021	18	28	19	20	50	87	2+1
2602022	2602023	18	28	26	20	50	94	2+1
2602024	2602025	18	28	19	25	55	91	2+1
2602026	2602027	18	28	26	25	55	99	2+1



Type "A"

### Type B

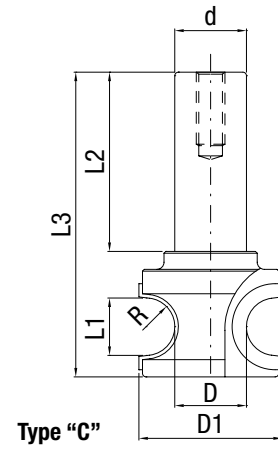
CODE RH	CODE LH	D	D1	L1	d	L2	L3	Z
2603020	2603021	20	30	19	20	50	87	2
2603022	2603023	20	30	26	20	50	94	2
2603024	2603025	20	30	19	25	55	92	2
2603026	2603027	20	30	26	25	55	99	2



Type "B"

## Type C

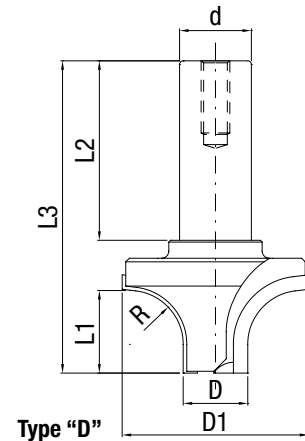
	CODE LH	D	D1	L1	d	L2	L3	Z	R
2600020	2600021	20	40	16	20	50	85	2	8
2600022	2600023	20	42	18	20	50	87	2	9
2600024	2600025	20	44	20	20	50	89	2	10
2600026	2600027	20	48	24	20	50	93	2	12
2600032	2600033	20	40	16	25	55	90	2	8
2600034	2600035	20	42	18	25	55	92	2	9
2600036	2600037	20	44	20	25	55	94	2	10
2600038	2600039	20	48	24	25	55	98	2	12



Type "C"

## Type D con forante in PCD · PCD plunge cut

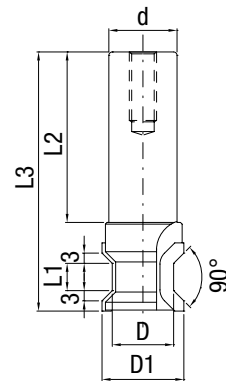
CODE RH		D	D1	L1	d		Z	R	
2601020	2601021	18	28	23	20	50	87	2+1	2
2601022	2601023	18	30	23	20	50	87	2+1	3
2601024	2601025	18	32	23	20	50	87	2+1	4
2601026	2601027	18	34	23	20	50	87	2+1	5
2601028	2601029	18	38	23	20	50	87	2+1	8
2601034	2601035	18	52	23	20	50	87	2+1	15
2601036	2601037	18	28	23	25	55	92	2+1	2
2601038	2601039	18	30	23	25	55	92	2+1	3
2601040	2601041	18	32	23	25	55	92	2+1	4
2601042	2601043	18	34	23	25	55	92	2+1	5
2601044	2601045	18	38	23	25	55	92	2+1	8



Type "D"

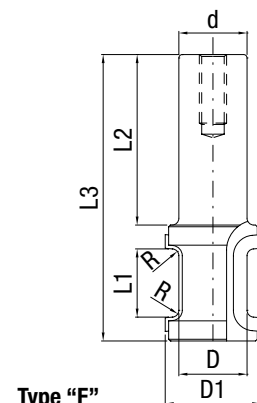
## Type E

CODE RH	CODE LH	D	D1	L1	d	L2	L3	Z
2604020	2604021	18	24	8	20	50	76	2
2604022	2604023	18	24	10	20	50	78	2
2604024	2604025	18	24	15	20	50	85	2
2604026	2604027	18	24	19	20	50	89	2



## Type F

CODE RH		D	D1	L1	d	L2	L3	Z	R
2605020	2605021	20	28	16	20	50	80	2	2
2605022	2605023	20	30	16	20	50	80	2	3
2605024	2605025	20	28	20	20	50	84	2	2
2605026	2605027	20	30	20	20	50	84	2	3



Type "F"